

Available For Long-Term Lease, Rent or Sale

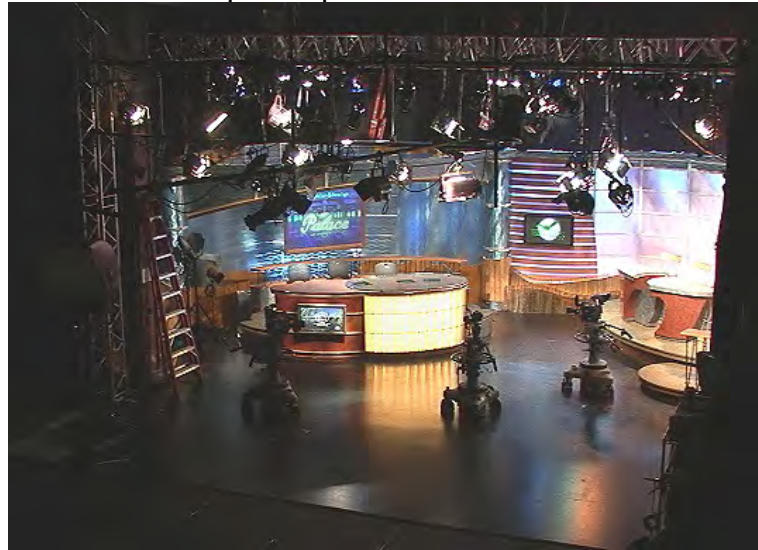
April 2017

Palace Production Center Facilities Overview

29 North Main Street

South Norwalk, Conn. 06854

www.palaceproductioncenter.com



Contact: Chris Campbell or Deb Weingrad (203) 853 1740
chris@palacedigital.com / deb@palacedigital.com

Table of Contents

- Summary
- I. Offices
- II. Common Areas
- III. Studio
- IV. Camera Packages
- V. Edit Rooms
- VI. Audio
- VII. Graphics / Duplication
- VIII. Master Control / Engineering
- IX. Storage
- X. Infrastructure

Summary

Palace Production Center is housed in the Palace Theater building, a 20,000-square foot turn-of-the-20th-century vaudeville theater to which substantial improvements have been made over the past 30 years, laying the foundation for the creation of a 21st-century film and digital media production center in a landmark building in historic and trendy South Norwalk.

- Originally built in 1902 as a 1,100-seat theater
- Extensively renovated into a post-production studio and office space in the early 1980s
- Ten parking spaces with an additional 213 parking spaces allowed in the Webster lot located close by
- The front of the building consists of a two-story office section with mezzanine used for office space totaling 14,800 square feet.
- The rear of the building contains the old theater, which has been extensively modified into a flexible soundstage ideally suited for photo, video and feature film shoots.
- The post-production studio contains a total of 4,500 square feet.

In addition to office and temperature and humidity controlled basement library/storage spaces, the building houses the following video/film areas:

- HD Production & Post
- Motion Graphics, Animation & VFX
- Audio Recording & Post- Radio & TV
- Duplication & Distribution

There is approximately 2,300 square feet of extra usable space that can be developed through conversion of the existing theater balcony and other unused space.

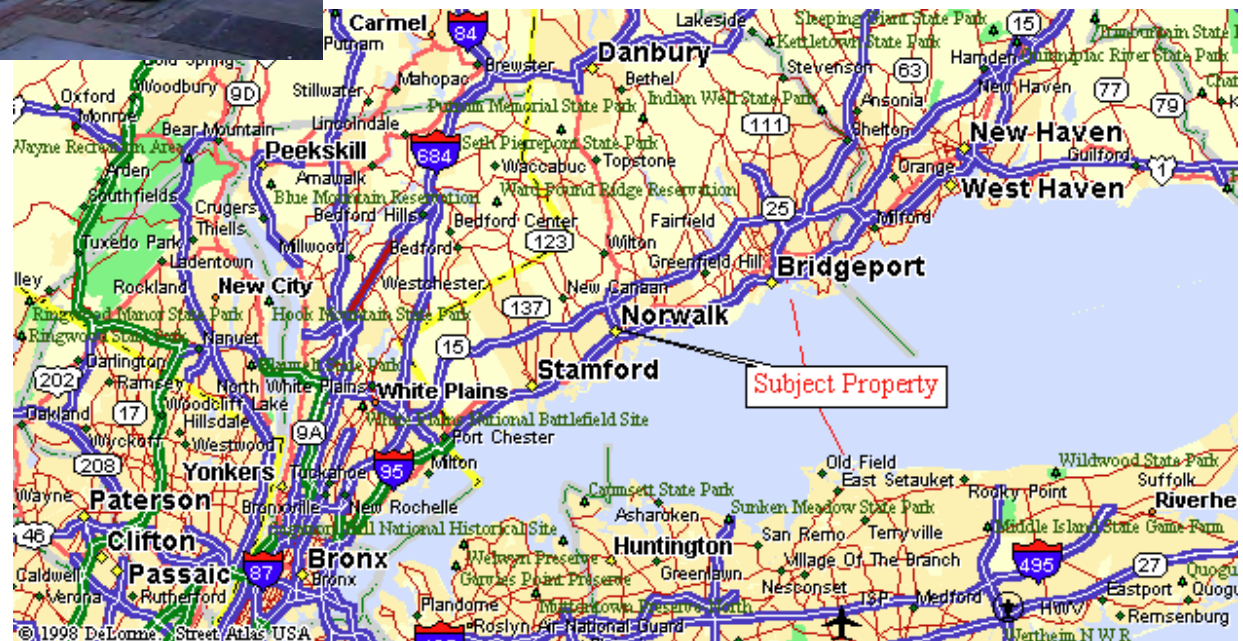




Palace Theater building is located on main thoroughfare in lively SoNo District

Easily accessed via major interstates I-95 and the Merritt Parkway

Walking distance (one block) from Metro North rail

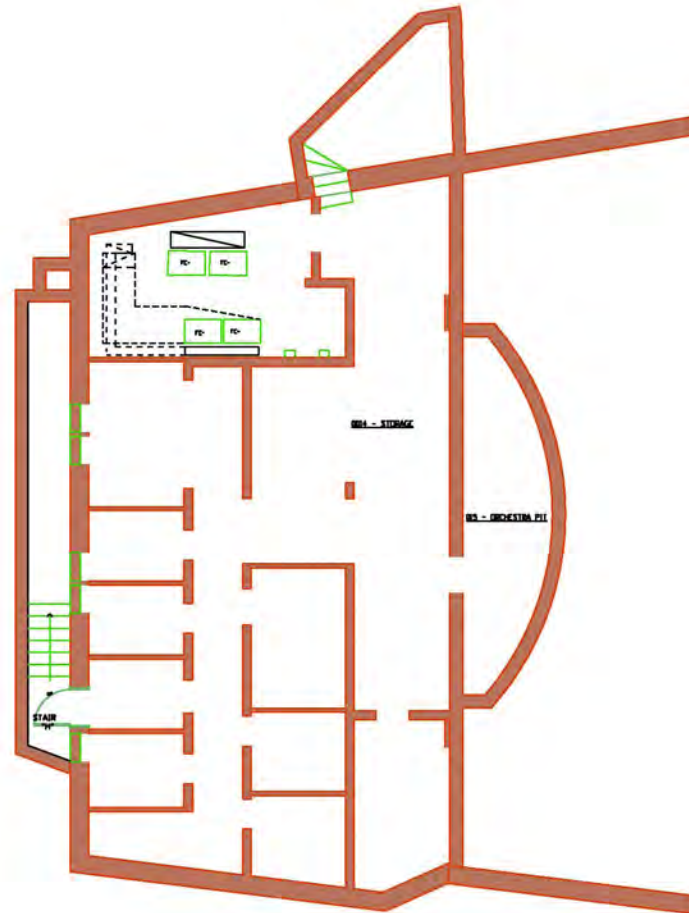




First Floor Plan



Second Floor Plan



Basement Floor Plan

I. Offices

FIRST FLOOR

- Editorial Offices 400 Square Feet
- Business Office 576 Square Feet
- Executive Office Space Adjacent to Lobby
- Total of 4,762 square feet with common areas, such as Conference Rooms
- Internet, Phones, Servers

LONG-FORM PRODUCTION OFFICE 560 Square Feet

SECOND FLOOR

Finished Production Offices and Mezzanine Offices Totaling 2,400 Square Feet

- Executive Office Space
- Open Production Office Space
- Internet, Phones, Servers



Executive Office Space Adjacent to Lobby



Office Space 2nd Floor, Mezzanine

II. Common Areas

COMMON AREAS

Totaling 1,732 Square Feet

- Conference Room
- Green Room
- Lobby



Green Room



Lobby



Conference Room

III. Studio

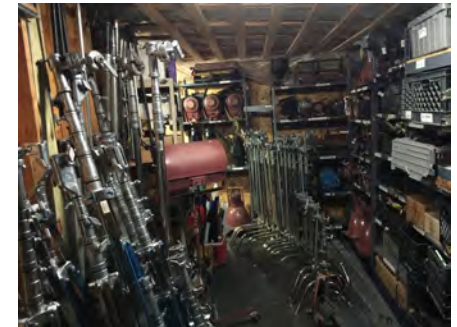
Studio 5,426 Square Feet

Flexible soundstage ideally suited for photo, video and feature film shoots

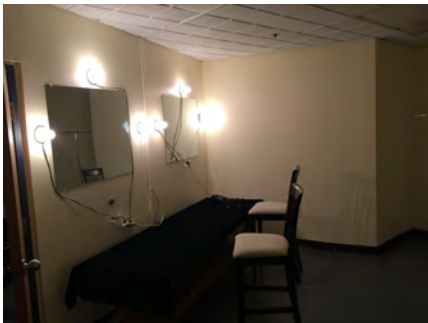
- 50 X 70 foot Studio Space
- Hard Walled White Cyc
- Motorized Lighting Grid
- 270° Green Screen — Up to 30 feet High
- Large Client Viewing Area for Monitors, Tables and WiFi
- Grip and Gaffing Areas
- Makeup Room
- Wardrobe Room
- Green Room



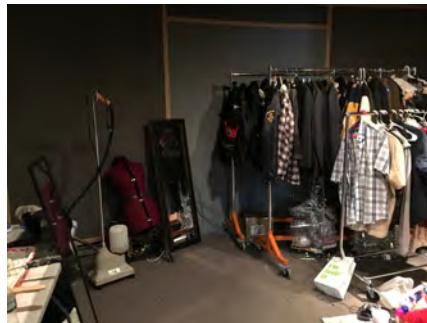
Studio



Tech Room



Makeup Room



Wardrobe Room



Palace studio with set for
"The Witches of Oz" film

IV. Camera Packages

RED Studio and Remote

- 2 Red EPIC with 6K Dragon sensors; all monitoring and support gear including tripod, batteries, adapters, cables, brackets and 6" LCD
- 1 Red Scarlet with all monitoring and support gear including tripod, batteries, adapters, cables, brackets and 6" LCD
- Lenses:
 - Red Prime Lenses
 - 18 mm
 - 25 mm
 - 35 mm



Remote Shoot with Palace RED Camera

Sony

- Sony NEX FS700U
- Tripod
- Batteries
- LED Light Panels
- Arri Light kits

Camera Package Support

- Video Village Tent, Chairs and Tables
- Monitoring
- 3 Lighting Kits
- Digital Acquisition Equipment
- 3-Ton Grip and Lighting Package
- 2 Cannon 5D with Full Set of Cannon Lenses
- Catering Tables, Chairs and Coolers

V. Edit Rooms

Edit Suites Totaling 3,264 Square Feet

Multiple standard-definition and high-definition editing suites

EDIT 3

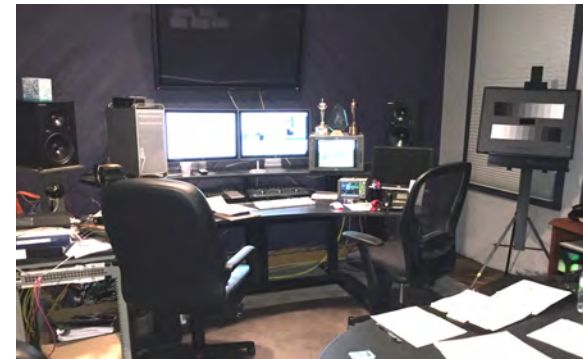
- Final Cut / Adobe Dual System
- S-1
- SAN and NAS Access
- Client Area



Edit 4

EDIT 4

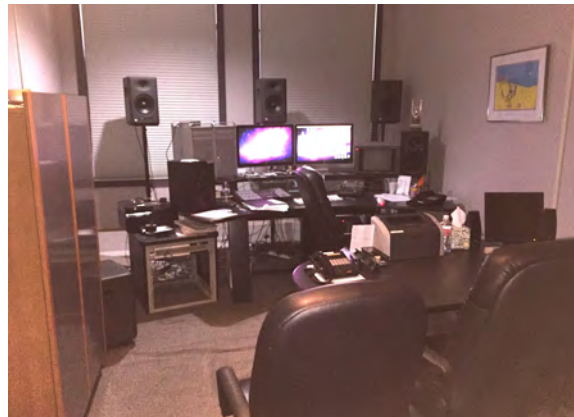
- Final Cut 7
- Stereo



Edit 5

EDIT 5

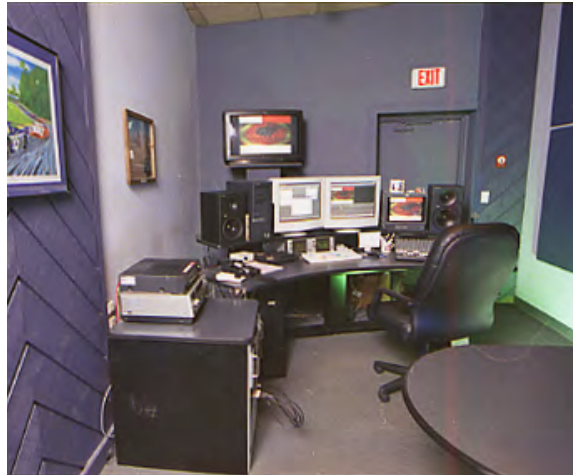
- Final Cut / Adobe Dual System
- 5-1
- DaVinci Color Correction
- Client Area



Edit 3

VI. Audio

- Fairlight 128 Channel 5.1 for Audio Recording, Editing and Mixing for Radio, Television and Film
- ProTools
- Sound Design
- Recording Booth



Audio Room



Audio Recording Booth

VII. Graphics / Duplication

Graphics

- 2D and 3D design and animation
- Motion Graphics & VFX
- White Board, Articulate, PowerPoint Programs

Duplication

- All Tape Formats
- CD
- DVD
- International
- Thumbdrives
- Interstitial
- Upload Broadcast



Graphics



Duplication Room

VIII. Master Control / Engineering

- Multiple Formats, Including Legacy 1", Betacam, D2, DigiBeta
- Multiple Legacy Mac, PC Computer Systems for Backwards Compatibility
- Storage
- 32 TB Networked SAN



Machine Room



IX. Storage

- Temperature and Humidity Controlled Basement Media Archives 2,560 Square Feet
- Temporary Props Storage Below Stage 1,568 Square Feet
- There is approximately 2,300 square feet of extra usable space that can be developed through conversion of the existing theater balcony



Temperature Controlled Basement Media Archives/Storage

X. Infrastructure

Through several millions of dollars of infrastructure investments, improvements were made to the building in several phases over several decades of its operation as the Palace Production Center, including installation of:

- New Electrical Service with Hook-up Connections for Generation
- Transformer Upgrade
- Staging Platforms Installation
- Hydraulic Lighting Grid Installation
- Lighting Circuits Control Systems
- Lighting Grid
- Grid Pipe Extensions
- Lighting System, Ancillary Elements
- Sound Proofing
- HVAC
- Sprinkler Design
- Sprinkler System Upgrades
- State-of-the-Art Fiber Pathways
- High-speed Internet
- Wireless
- New Computer/ Phone High-Speed Network Installation
- Roof Patio
- Dry System Fire Suppressant System Installation
- Boiler Upgrade



View of Studio Electrical Grid (top)
and Power Panel (bottom)